

CS-327 SPECIFICATIONS

Wire Sizes –
Up to 100mm² (0000 AWG)

Wire Diameter –
Up to 30mm (1.2")

**Minimum Wire Length
(Standard Mode) –**
250mm (10")

**Minimum Wire Length
(Short Mode) –**
<50mm (<2") Wire Dependent

Strip Lengths –
Programmable from 0 to 1000mm
(0 to 40") Wire Dependent

Wire Feed Rate –
Up to 2.5M/sec (492 ft/min)

Electrical Requirement –
220V, 1 Phase, 50 or 60 Hz

Air Requirement –
5 CFM @ 80 PSI

Dimensions (LxWxH) –
1520mm x 605mm x 1455mm
(50" x 23.75" x 57.25")

Estimated Shipping Weight –
1090Kg (2400 lbs.)

Also Standard

- One pair of heavy-duty cutting blades
- Complete safety guards and electrical interlock
- Wire run-out detection switch
- Inch or metric measuring
- Owner's manual

Note: Specifications are subject to change without notice, and exceptions may apply depending on application, wire and other variables. Optional equipment may require standard machine modification and/or later specifications.

CS-327 GENERAL OPTIONS



Wire Straightener - For more efficient processing, an optional heavy-duty wire straightener can be added to the CS-327 in the prefeed position. Two models are available: a one-axis (vertical) straightener or a two-axis (vertical and horizontal) unit.



Wire Guide Kit - The CS-327 comes standard with one wire guide kit, which allows for quick change ability without the need for tools. Additional wire guide kits are also available.

Additional Options

- Integrated inkjet system located within the machine to reduce unnecessary wire waste
- Wire slitting unit for round or flat cables
- Additional pre-feeding and collection options

SUPPORT SERVICES

Artos' group of experienced engineers can help you select and design the ideal network of wire processing machines from our modular family of servo-driven units. We can also provide "hands-on" support, helping with field installation and start-up ... and arrange for ongoing technical support and maintenance as required.



CS-327

LARGE CABLE WIRE PROCESSOR

ARTOS
ENGINEERING COMPANY



CS-327



THE NEXT GENERATION OF HEAVY-DUTY WIRE PROCESSORS IS HERE

No one tackles large cable processing better than Artos Engineering.

For years, machines like the CS-23 and CS-27 have lead the market, helping companies like yours process heavy-duty wire with maximum speed and productivity in mind.

Now, Artos combines the capabilities of these industry "legends" into one robust, servo-driven unit – the CS-327 large cable wire processor. There simply is no other machine on the market today with this kind of power ... or this kind of processing range.

The CS-327 is ideal for processing:

- Battery cable
- Welding cable
- Power cable for appliances
- Multi-conductor cable for signal and power
- And other heavy-duty cables and wires

And it even has a short wire mode (under 9") for those special applications.



1 Infeed/Outfeed Units

The CS-327 features servo-driven, tractor-style belt infeed and outfeed drive units. A separate encoder is built into the infeed unit to constantly check for proper wire length and for any slips or snags, assuring accurate operation at all times. All tractor-style belts are designed for long life, and can be easily changed.

2 Collection Tray

The base cabinet of the Artos CS-327 features a large slug collection tray that can be easily removed for slug disposal. A handy second tray is included below for storing additional guides and blades.

3 Cutterhead

Our servo-driven, dual blade cutterhead makes easy work out of your toughest wire. This heavy-duty cutterhead is fully

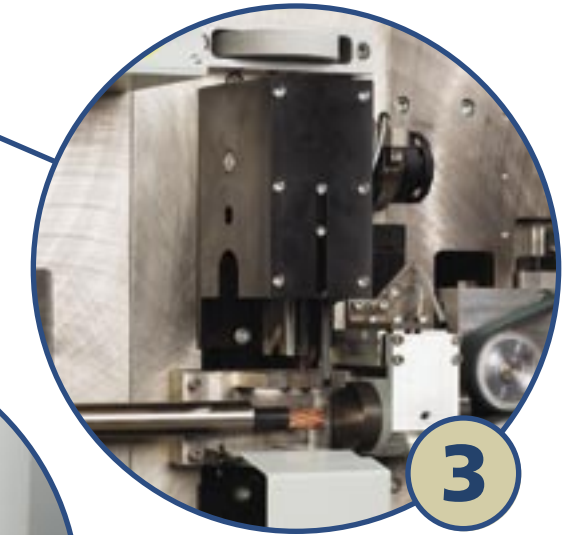
programmable, making it easy to accommodate a variety of stripping lengths and wire conductor sizes. The CS-327 also offers a unique cutterhead "dial" that operators can manually turn to open and close the cutterhead to check for blade alignment during set-up.

4 PC and GUI

As with Artos complete family of servo-driven wire processors (including the CS-326, MTX and STX models), the CS-327 large cable wire processor features a Windows-based PC and Artos' standard Graphical User Interface. Common programming allows you to train your operators once so they can easily use all of our equipment and even share wire programs in a network. Our standard built-in PC is also used to run complete machine diagnostics to help simplify maintenance and troubleshooting.



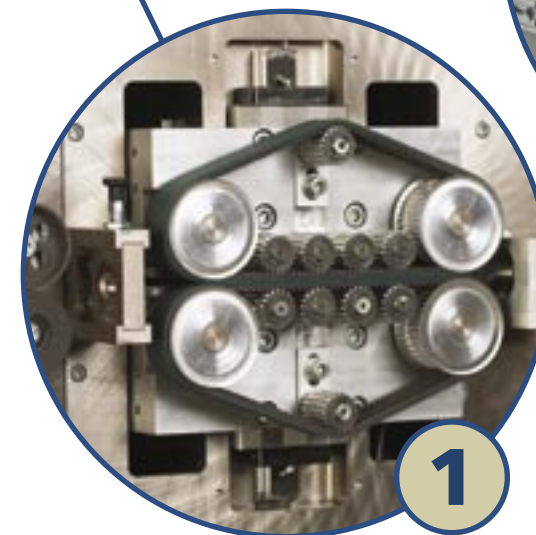
4



3



2



1


* Depending on the application, a **programmable outfeed guide** can be moved in or out to help efficiently process your wire. "In" is the machine's normal mode; "out" is for long slug removal and lets slugs easily fall out.

In addition, the outfeed drive unit features yet another Artos innovation – a **programmable "gap setting"** which allows your processed wire to travel through the machine without damage. You can place just enough tension on the belts to grip the wire's insulation but leave the conductor safe and intact.



CS-327

Option Description and Price List

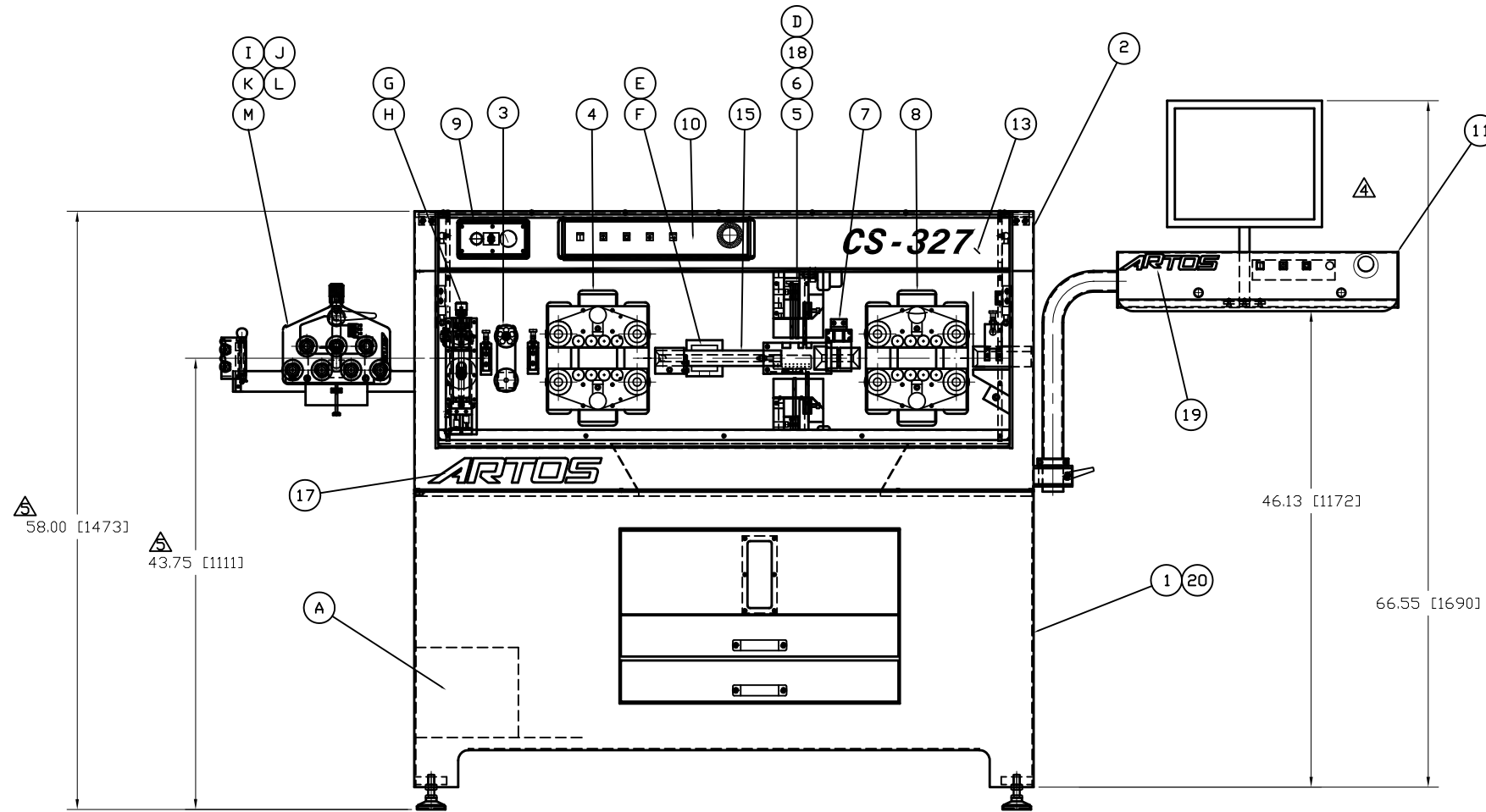
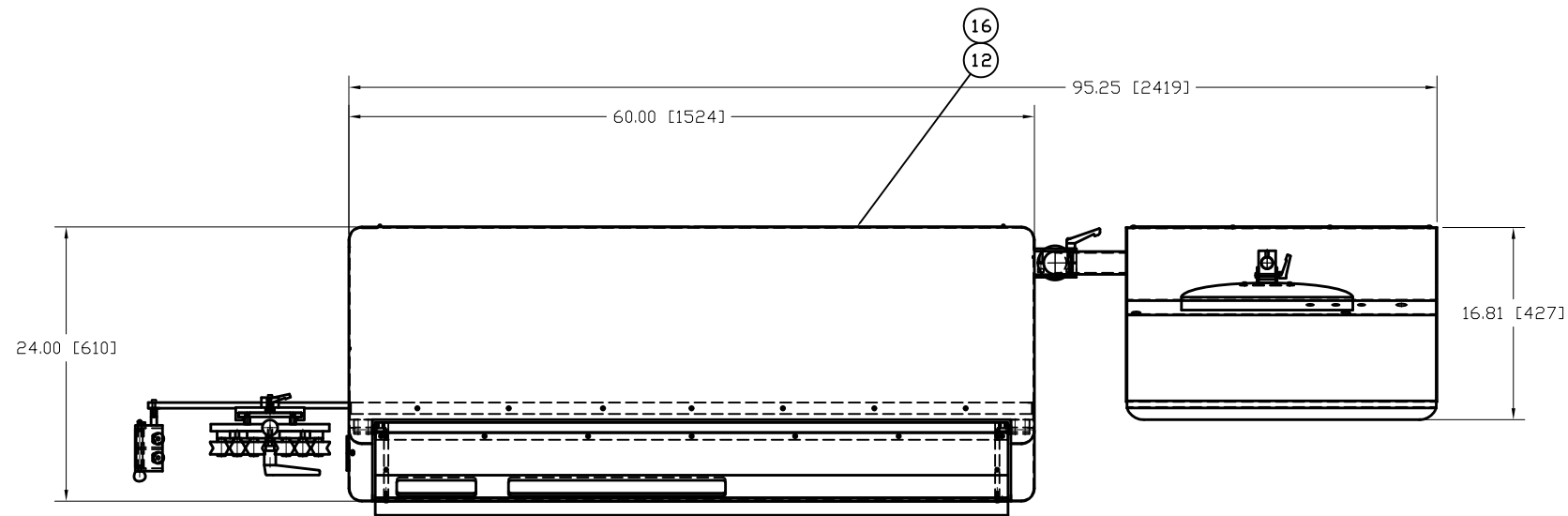
Item:	Description	Photo	Price
CS-327 Base	<p>Base Machine with 208 / 230V, 1Ph., 60/50 Hz Electrical Air supply requiring 80 PSI, with 5 CFM Base Cabinet with Slug Collection Tray and Guide Storage Tray Dell P.C. Featuring Windows XP and Artos Graphical User Interface UPS Power Supply Back-up for PC Complete Machine Computer Diagnostics Heavy Duty <i>Servo</i> Driven Dual Blade Cutterhead One Pair Heavy Duty Cutting Blades <i>Servo</i> Driven Tractor Style Belt Infeed and Outfeed Drive Units Separate Encoder for Length Measurement and Slip Detection One Wire Guide Kit (select size from 0.31", 0.56", 0.88" or 1.25") Complete Safety Guards with Electrical Interlock Wire Run-Out Detection Switch Inch or metric measuring One owner's manual</p>		\$62,950
Domestic / Air Box	Crate for shipment within USA or air freight shipment		\$726
Ocean / Export Box	Crate for ocean shipment.		\$878
Installation / Training	<p>Installation and training by Artos direct technicians. Recommend two days minimum. Price is per day. Travel expenses are not included and billed separately.</p>		\$950
Three Blade Cutterhead	<p>Provides a cutterhead with one pair of cutting blades, and two pairs of stripping blades. Ideal for high speed processing of discrete wire such as battery cable processing. This option nearly doubles the output, application dependent. Option limits maximum strip length to 38 mm (1.5 inch).</p>		\$1,500
Additional Guide Kits	<p>Additional guide kits for running various wire sizes. Standard kits range in size from 0.12 inch (3mm) to 1.25 (30mm).</p>		\$1,750
Large Wire Kit	<p>Increases the maximum wire diameter from 30 mm (1.25 inch) to 35 mm (1.5 inch). Guide kit is sold separately.</p>		\$1,500
Stripping Blades	<p>Stripping blades are not included, and must be purchased to match your wire size.</p>		From \$250/Pr.



CS-327

Option Description and Price List

Item:	Description	Photo	Price
Special Steel Cable Cut-Of Blades	Upgrade to Cut-off blades designed for cutting steel cable. Offers replaceable inserts. Replaces standard cut-off blades.		\$875 / Set
Heavy Duty Wire Straightener	Device to straighten wire. Available in Vertical Axis only or Both Vertical / Horizontal Axis.		Vertical \$3150 Both \$5950
Axial Wire Slitting Device	Programmable device to slit wire along the axis. Used for two, three or four bonded wires to split bonding. Also used for long stripping of larger wires. Position and length of slit is programmable.		\$5,750
Ink Jet Interface	Interface for Imaje 9040 (contrast or master) ink-jet system. Fully programmable interface allows for storage and recall of all marking codes. Interface <u>does not</u> include marker, which is sold separately.		\$7,450
CD-17	Coiling option for collecting long wires. Choice of 3 different bowl diameters (18 inch, 24 inch, 30 inch) . Two bowl system allows operator to remove the wire from one bowl as the machine is loading the second bowl.		See Artos
1.5 Meter Collection Tray	1.5 meter (59 inch) collection tray item 4-143091.		\$2,950
CD-16 3M Motorized Collector	Three meter motorized long wire collector.		See Artos
Spare Parts Kit	Common replacement parts for CS-327		\$1,430



-510 QTY.	-500 QTY.	REF. NO.	PART NO.	DESCRIPTION
	1	1	5-142815	LOWER FRAME ASSEMBLY
	1	2	5-142827	UPPER CABINET ASSEMBLY
	1	3	5-142430	ENCODER ASSEMBLY
	1	4	5-142325-1	INFEED WIRE FEED ASSEM.
	1	5	5-142261	CUTTER HEAD ASSEMBLY
1		6	5-142780	KNOCKOUT & MANIFOLD ASSY
	1	7	5-142801	WIRE GUIDE TUBE ASSEMBLY
	1	8	5-142326	DISC. WIRE FEED ASSEM.
	1	9	5-142783	PNEUMATIC ASSEMBLY
	1	10	5-142856	OPERATOR PANEL ASSEMBLY
	1	11	5-143277	OPERATOR STATION ASSEM.
	1	12	5-142822	ELECTRICAL ENCLOSURE
	1	13	142738	LABEL
	1	14	5-142809	LOOSE PARTS
	1	15	6-142406	WIRE ADAPTION 2 & 3BLADE
	1	16	7-142302	ELECTRICAL SCHEMATIC
	1	17	139168	LABEL 'ARTOS'
1		18	5-142278	TOOL HOLDER 2 BLADE
	1	19	143270	LABEL 'ARTOS' SMALL
	1	20	5-144837	LABEL LOCATION ASSEMBLY

OPTION LIST			
QTY.	REF. NO.	PART NO.	DESCRIPTION
1	A	5-144704-5	COMPUTER SETUP ASSEMBLY
1	B	6-142859	SOFTWARE CD
1	C	2-142778-510	TOOL HOLDER ASSM. 2 BLADES
1	D	5-142897	TOOL HOLDER ASSEM. 3 BLADES
1	E	5-142325-2	FACEPLATE W/D IMAGE
1	F	5-142831	IMAGE MOUNTING KIT
1	G	5-142832	SLITTER ASSEMBLY-SINGLE
1	H	5-142833	SLITTER ASSEMBLY-DOUBLE
1	I	5-142804-1	HD. WIRE STR. ONE-AXIS
1	J	5-142805	HD. WIRE STR. TWO-AXIS
1	K	5-142804-2	HD. WIRE STR. OVAL WIRE
1	L	5-143151	SMALL WIRE STR. ONE-AXIS
1	M	5-143152	SMALL WIRE STR. TWO-AXIS
1	N	5-143607	WM6 INTERFACE
1	O	5-143413-1	2 PREFEEDER INTERFACE AND PLUG
1	P	5-143761	COILING BOWL ASSEMBLY
1	Q	5-143200	3M COLLECTOR

WIRE GUIDE SELECTION 6-142406

CABLE TO MOUNT ON PF7 5-144955
 CABLE TO MOUNT ON 2K REELOMATIC 5-143414
 KIT FOR 2K PREFEEDER 4-143423
 CABLE TO MOUNT ON 5K REELOMATIC 5-143867
 KIT FOR 5K PREFEEDER 4-143925

PART NO.	DESCRIPTION
2-142778-500	BASE PARTS

4-142778	HEAT TREATMENT/SURFACE TREATMENT	MATERIAL DESCRIPTION	USED FOR	CLASS CODE	
			9-CS327999000		327
	CONFIDENTIAL <small>This document contains CONFIDENTIAL proprietary information which shall not be used, reproduced, or disclosed to others without prior written approval of Artos Engineering Company.</small>	D	ARTOS ENGINEERING COMPANY		REVISION DATE
	WORK TO MEAN DIMENSIONS DO NOT SCALE DRAWING		SCALE	1:8	05/26/09
ES-1 STANDARDS APPLY PLEASE READ THEM BEFORE MFG.		DRAWN BY H. KEENE	DATE 02/08/2005	REVISION 8	
		CHECKED BY K. COOTE		SHEET NUMBER 1 of 1	
		MAIN ASSEMBLY CS 327		4-142778	

REVISIONS
△ ECD 06-15
02/17/2006
LALUMNDIER
△ ECD 06-33
03/10/2006
LALUMNDIER
△ ECD 06-85
5/8/2006
LALUMNDIER
△ ECD 06-161
8/3/2006
LALUMNDIER
△ ECD 08-19
01/10/2008
D.WESTRICK
△ ECD 08-215
09/15/2008
D.WESTRICK
△ ECD 09-17
05/26/2009
SHAPTE
△ ECD 10-23
02/03/2010
M. KIRST